



How to Deploy Access Gateway Plug-in for Windows and Endpoint Analysis (EPA) Microsoft Installer (MSI) Packages by Using Active Directory Group Policy

CTX124649 | Created on Mar 26, 2014 | Updated on Sep 09, 2014

Article | Topic: Other

[See Applicable Products](#)

Objective

This article contains information about deploying the Access Gateway Plug-in for Windows and Endpoint Analysis (EPA) Microsoft Installer (MSI) packages by using an Active Directory Group Policy.

Environment

- WinSCP or alternate secure copy or secure FTP application must be installed on the computer - Microsoft Active Directory Users and Computers snap-in

Instructions

To deploy the Access Gateway Enterprise Edition Windows plug-in MSI package by using an Active Directory Group policy, complete the following procedures:

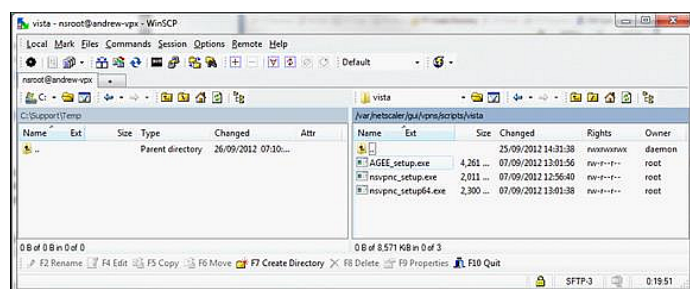
- [Acquiring The Access Gateway Plug-In For Windows Installation Package](#)
- [Acquiring the Access Gateway Endpoint Analysis Plug-in](#)
- [Installing the Access Gateway Plug-in for Windows MSI Package on a Computer](#)
- [Installing the Access Gateway Endpoint Analysis MSI Package on a Computer](#)
- [Configuring Active Directory Group Policy On Windows 2008 Server Domain Controller To Deploy The Packages](#)

Acquiring the Access Gateway Plug-in for Windows Installation Package

Option 1: Download the required release of the Access Gateway Plug-in for Windows software from [NetScaler Downloads](#). Use a valid My Account on Citrix.com credential to download the software.

Note: Download the same release of the client software as that on Access Gateway Enterprise Edition appliance. You can download either the 32-bit or 64-bit version of the software.

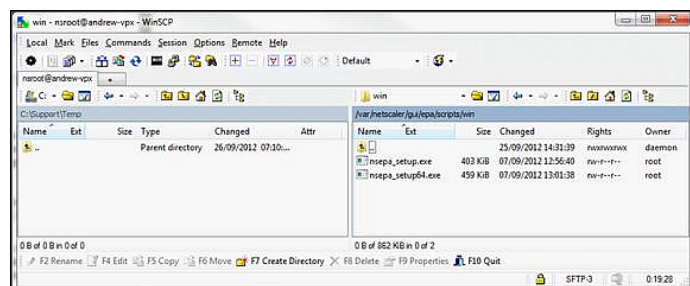
Option 2: Use the secure copy or secure FTP application to download the client from the Access Gateway Enterprise Edition appliance. The client is available in the /var/netscaler/gui/vpn/scripts/vista directory of the appliance, as shown in the following screen shot:



- The 32-bit version filename is nsvpn_setup.exe.
- The 64-bit version filename is nsvpn_setup64.exe.

Acquiring the Access Gateway Endpoint Analysis Plug-in

Use the secure copy or secure FTP application to download the client from the Access Gateway Enterprise Edition appliance. The client is available in the /var/netscaler/gui/epa/scripts/win directory of the appliance, as shown in the following screen shot:



- The 32-bit version filename is nsepa_setup.exe.

- The 64-bit version filename is nsepa_setup64.exe.

Installing the Access Gateway Plug-in for Windows MSI Package on a Computer

To install the Access Gateway Plug-in for Windows MSI package on a computer, complete the following procedure:

1. Run the appropriate installation file, such as nsvpnc_setup.exe and nsvpnc_setup64.exe.
Note: Do not click Next in the Installer dialog box.
2. Run the following command to open the command prompt:
cmd
3. Run the following command to change to the temporary directory:
cd %temp%
4. Run the following command to search for the Access Gateway Plug-in for Windows installation file:
dir agee.msi /s
5. Copy the file agee.msi to an end-user accessible UNC path on a domain server, such as \\server.example.com\share\agee.msi.
6. Cancel the installation.

Installing the Access Gateway Endpoint Analysis MSI Package on a Computer

To install the Access Gateway Endpoint Analysis MSI package on a computer, complete the following procedure:

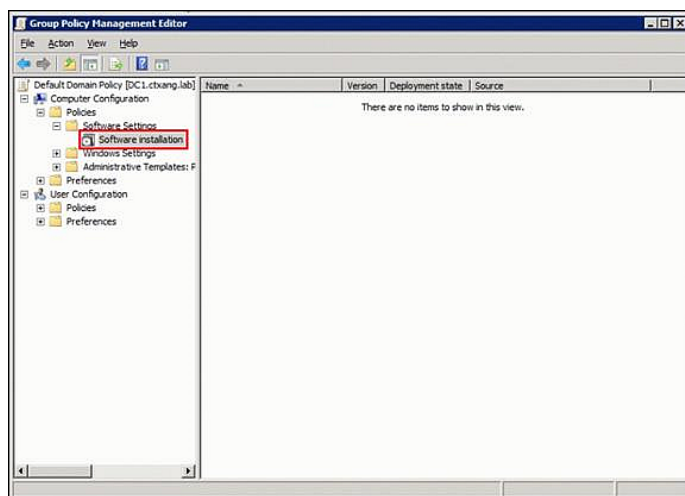
1. Run the appropriate installation file, such as nsepa_setup.exe and nsepa_setup64.exe.
Note: Do not click Next in the Installer dialog box.
2. Run the following command to open the command prompt:
cmd
3. Run the following command to change to the temporary directory:
cd %temp%
4. Run the following command to search for the Access Gateway Plug-in for Windows installation file:
dir nsepa.msi /s
5. Copy the file agee.msi to an end-user accessible UNC path on a domain server, such as \\server.example.com\share\nsepa.msi.
6. Cancel the installation.

Configuring Active Directory Group Policy on Windows 2008 Server Domain Controller to Deploy the Packages

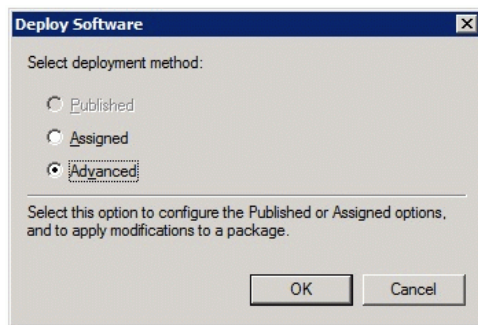
Access Gateway Plug-in for Windows

To configure Active Directory on Windows 2008 Server Domain controller, complete the following procedure:

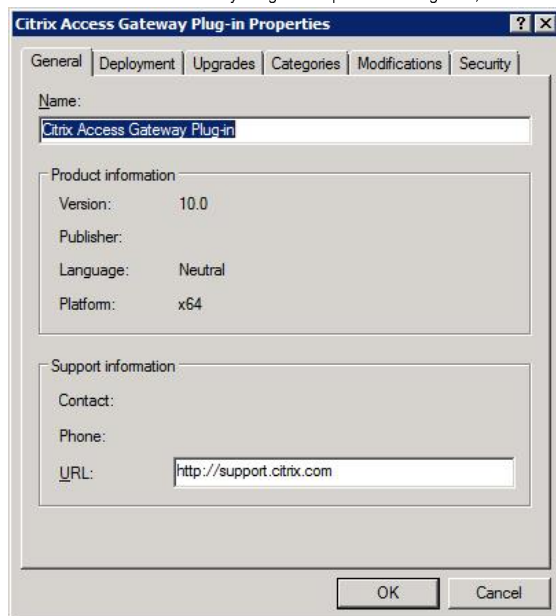
1. From the Start menu, select Group Policy Manager. The Group Policy Manager option is available in Programs > Administrative Tools.
2. Either create or edit an existing Group policy. To edit a policy, right-click the policy and select Edit from the shortcut menu.
3. In the Group Policy Management Editor, expand the Computer Configuration node.
4. Expand the Policies node.
5. Expand the Software Settings node.
6. Select the Software Installation node.



7. Right-click Software Installation and select New > Package from the shortcut menu.
8. Click Browse and navigate the directory structure to select the agee.msi file.
9. Select Advanced option and click OK.



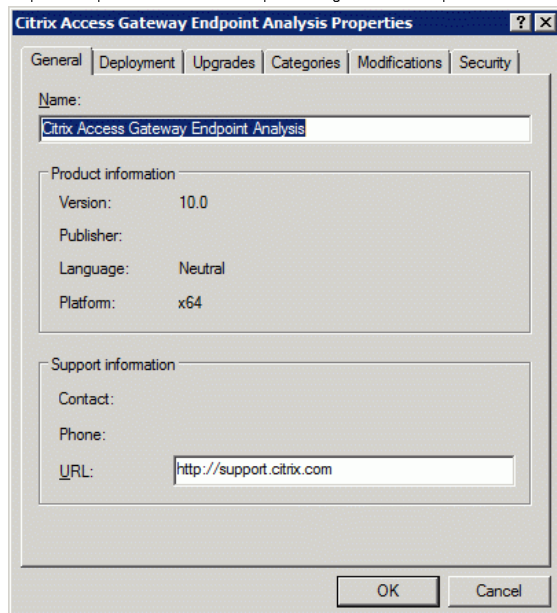
10. In the Citrix Access Gateway Plug-in Properties dialog box, make the required changes to the settings, as shown in the following screen shot:



11. Click OK.

Access Gateway Endpoint Analysis

Repeat Steps 1 to 11 and in Step 8 change for the nsepa.msi file. The end result in Step 10 should be as per the following screen shot:



Applicable Products

- [NetScaler Gateway](#)
- [NetScaler](#)

Share your comments or find out more about this topic

[Citrix Forums](#)

